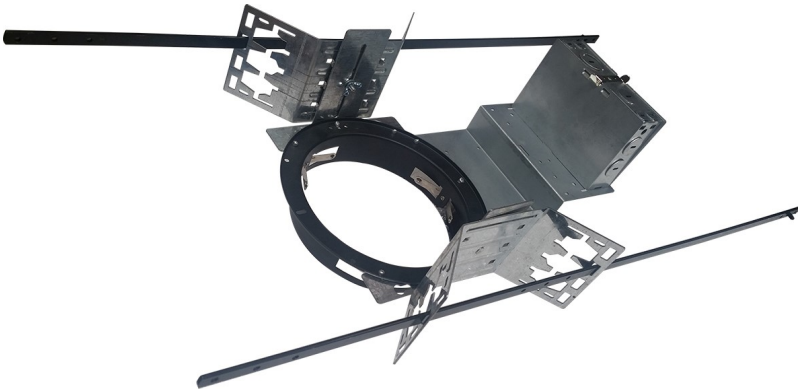


JOB NAME: _____

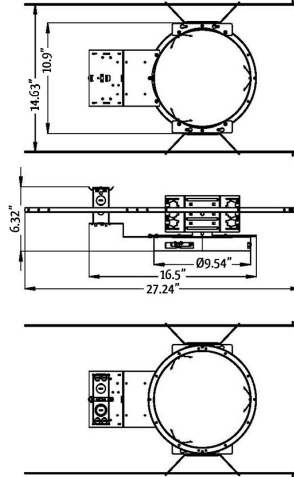
DATE: _____

TYPE: _____



DIMENSIONS:

27.24"(L) x 14.63"(W) x 6.32"(H)



CRL-HSG-10

COMMERCIAL RECESSED LIGHT HOUSING

MODEL	DESCRIPTION
CRL-HSG-10	10" HOUSING FOR COMMERCIAL RECESSED LIGHT

The 10-inch housing fits $\varnothing 10'' \sim \varnothing 10.7''$ mounting frame diameters.

HOUSING SPECIFICATIONS:

- Extruded Aluminum
- Haze finish

